



Admission Arrangements and Information for Entry September 2023

Date of Selection Testing:
Saturday, 24th September 2022





Contents



Headteacher's Introduction	4
Timetable for 2023 Entry	5
Procedures for Applications for Admission	6
Further Information	7
Selection Tests	10
Sample Questions and Information for Candidates	12
Map of School Priority Area	17



Headteacher's Introduction

.....

Dear Parents/Carers

Thank you for your interest in Skipton Girls' High School.

You are warmly invited to our Year 5 Open Evening, where teaching staff and students are available for questions and to celebrate their experience of our school.

Thursday 14th July 2022, 6.00pm - 8.30pm

The admissions procedure will be explained during this evening. You can also find out more information about Skipton Girls' High School by visiting our website:

www.sghs.org.uk/admissions-to-year-7

This booklet is designed to assist parents/carers to understand the admissions process and to provide information about the selection tests at Skipton Girls' High School and it includes sample questions.

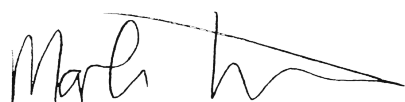
It should be read in conjunction with your Local Authority's admission documentation. North Yorkshire Local Authority will be distributing their admission booklets and details of how to apply for school places to parents/carers of all Year 6 pupils living in North Yorkshire and other Local Authorities will make similar arrangements. There is also an online website at: www.northyorks.gov.uk/school-admissions

We are holding our selection tests on Saturday 24th September 2022. This will give girls time to settle into Year 6 but is also early enough to ensure that parents/carers know whether their daughter has reached the required standard for Skipton Girls' High School before they fill in the Common Application Form for their Local Authority.

It is very important that if you wish your daughter to sit the selection tests, **you must submit the online registration form by midnight on Wednesday, 24th August 2022** If you haven't registered by this deadline your daughter will not be able to sit our selection tests and therefore cannot be considered for a place at Skipton Girls' High School.

Please do not hesitate to contact our Admissions Office at admissions@sghs.org.uk if there is anything that requires further explanation or clarification.

Yours faithfully



Mr M Turner
Headteacher

Timetable for 2023 Entry

Thursday 14th July 2022	<p>Open Evening for September 2023 entry.</p> <p>The Open Evening is for Year 5 pupils and their parents/carers. The school is open from 6:00pm to 8:30pm.</p> <p>Presentations at: 6:15pm and 7:00pm</p>
July 2022	<p>North Yorkshire LA composite admissions prospectus circulated to parents/carers (via primary schools).</p> <p>Parents/carers of children living outside the area should obtain the equivalent document from their own Local Authority.</p>
Wednesday, 24th August 2022	<p>Closing date for online registration. The form must be submitted by midnight on Wednesday, 24th August 2022 to ensure your daughter is registered for the selection tests.</p>
w/c 12th September 2022	<p>Two copies of your daughter's personal registration card will be posted out to you.</p>
Saturday 24th September 2022	<p>Selection tests at Skipton Girls' High School 9:15am till approximately 1:00pm.</p>
By 4.00pm Wednesday 28th September 2022	<p>Inform school in writing of any circumstances which may have affected performance during the tests.</p>
By Monday 10th October 2022	<p>Test results to parents/carers.</p>
By 31st October 2022	<p>For Year 6 pupils living in North Yorkshire (NY), parents/carers will be required to return the completed NY LA Common Application Form to NY LA. Parents/carers of children attending a NY school but who live outside NY must complete the appropriate LA Common Application form. All parents/carers must return their completed applications by 31st October 2022.</p>
By Wednesday 1st March 2023	<p>The appropriate LA will write to every parent/carer, who completed an application, to inform them of their allocated secondary school place.</p>

Procedures for Applications for Admission

.....



Applications for Admission into Year 7

The Governors welcome applications from the parents/carers of girls born between 1st September 2011 and 31st August 2012. Applications will be considered for admission to Year 7 from parents/carers of girls born after 31st August 2012, but the Governors will require evidence of exceptional academic ability together with adequate social and physical development to enable such girls to benefit from early entry.

Application forms

Parents/carers will need to complete two separate forms.

LA Common Application Form

The Local Authority (LA) in which you live will provide a Common Application Form. Copies of this will be circulated to the parents/carers of all Year 5 pupils living in North Yorkshire in early July 2022. Parents/carers of girls who do not live in North Yorkshire will need to obtain the corresponding form from their home LA.

Parents/carers will be invited to state on the Common Application Form the names of a number of secondary schools in priority order and this order of preference will be crucial (see page 8). It will not be possible to guarantee a place if SGHS is not identified as first priority on the Local Authority form.

Skipton Girls' High School Registration Form

The online form registers your daughter for the selection tests. An automated message will confirm successful registration. **Closing date: midnight on Wednesday, 24th August 2022.**

Early September you will receive, by post, two copies of your daughter's personal registration card, which will help with organisation on the day.

If your daughter has any additional needs, such as a hearing or visual impairment or other Specific Learning Difficulty (SpLD), or language need, it is important that you tell us about this well before the tests so we can make the necessary adjustments.



Further Information

How will I know if my daughter has reached the required standard in the selection tests?

Your daughter will sit the tests on Saturday 24th September 2022. The tests are marked in school. The Governors' Admissions Committee then considers which girls have reached the required standard to be considered for education at the school. Parents/carers will receive a letter informing them whether their daughter has reached the required standard by Monday 10th October 2022. Parents/carers will be informed the scores when the required standard has not been reached. **We will not release test scores for the pupils who have reached the required standard as we feel successful students should start at SGHS on an equal footing.**

Priority of entry

If the school receives applications from more than our pupil admission number who reach the required standard in each one of the selection tests, it will not be possible to offer places to all of them. The Governors' Admissions Committee will decide which girls to offer places to by using our oversubscription criteria (see Admissions Policy for details).

The School gives priority to applications from girls living in the Priority Area who have reached the required standard in each one of the tests, although it is anticipated that places will be available for girls beyond this area (see Map on page 17). It has always been possible to offer places to all girls living in the Priority Area who have reached the required standard in each of the tests, but it may not be possible to offer places to all girls living outside this area who have reached the required standard.





How does the equal preference scheme work?

The Local Authority Common Application Form requires parents/carers to nominate a number of schools in order of preference. Once the various admissions criteria have been applied by the nominated schools, some pupils may be eligible for places at more than one school. The Local Authority will always allocate places by reference to the parents'/carers' order of preference as expressed on the Common Application Form. It is important that parents/carers realise that the school which can offer a place and is listed highest in priority on the form will be the school which will be offered to parents/carers on 1st March 2023. Therefore, it is impossible to guarantee a place at SGHS unless SGHS is entered as a first preference on the Local Authority form.

For example, if SGHS is put as first choice:

- Preference 1 - SGHS
- Preference 2 - School X

Outcome: Either

1. A place will be offered at SGHS

Or

2. If no place can be offered at SGHS School X must consider the application as if it was the first choice.

If School X is put as first choice:

- Preference 1 - School X
- Preference 2 – SGHS

Outcome:

If there is a place available at School X that place and that place only will be offered.

SGHS can only consider the application if no place is available at School X.





What should I do if my daughter is ill on the test day?

If your daughter is totally incapable of sitting the tests on the day, telephone the school (01756 707600) before 9.15am. You must then take her to see the doctor as soon as possible and obtain a medical certificate or doctor's letter. A copy of the certificate or doctor's letter must be received by 4.00pm Wednesday 28th September 2022 at the very latest. We will then make arrangements for your daughter to sit the test as soon as possible. This will be within a week of the original date.

What should I do if I think my daughter's performance in the selection tests may have been affected by certain factors?

If you think your daughter's performance in the selection tests has been affected by certain factors you should e-mail admissions@sghs.org.uk before 4.00pm Wednesday 28th September with the relevant details.



Selection Tests

.....

The School's entrance tests are set by GL Assessment. Each applicant must sit three multiple choice tests in: English, Mathematics and Verbal Reasoning.

These are **GL Assessment Papers and are copyright.**

- The Mathematics paper is comprised of multiple choice questions.
- The English paper consists of two extracts with questions, plus questions which may include spelling, punctuation and grammar. All questions are multiple choice.
- The Verbal Reasoning paper is comprised of multiple choice questions.

Once the three tests have been marked, each test result is expressed as a standardised score which take a child's age into account, and this helps ensure younger students are not disadvantaged. Skipton Girls' High School is part of a local consortium of north of England grammar schools. Testing uses the same assessment instruments and takes place on the same day allowing local comparison of mark distributions.

As the papers used in the entry tests are obtained from an educational foundation and are copyright, we cannot include past papers in the admissions handbook.



The following information for Parents/Carers has been provided by GL Assessment

GL Assessment

Practice Papers: Tests For 11+ Preparation

GL Assessment publishes tests used in the admissions procedure by Skipton Girls' High School. We are, therefore, in a position to provide authentic materials to help your child prepare. In particular, GL Assessment Practice Papers provide:

Relevant Question Practice

Experience questions similar to those used within the real tests from the test publishers themselves.

Authentic design

Question design, practice items, written and oral instructions are all just as your child will encounter in the real tests.

Appropriate answer format and coverage

Skipton Girls' High School will be using 'multiple choice format' tests, with children placing their answers on a separate sheet.

The most appropriate packs from the range of GL Assessment Practice Papers are as follows:

Pack Name	ISBN
Multiple Choice Verbal Reasoning Pack 1	9780708727614
Multiple Choice Mathematics Pack 1	9780708727584
Multiple Choice English Pack 1	9780708727553
Multiple Choice Verbal Reasoning Pack 2	9780708727621
Multiple Choice Mathematics Pack 2	9780708727591
Multiple Choice English Pack 2	9780708727560
Multiple Choice Verbal Reasoning Pack 3	9780708727577
Multiple Choice Mathematics Pack 3	9780708727607
Multiple Choice English Pack 3	9780708727638
Verbal Reasoning Bundle	9780708727690
Mathematics Bundle	9780708727683
English Bundle	9780708727676

These packs are part of a full range of GL Assessment Practice Papers available online. NB: Other similar practice papers are available from a range of publishers.

Useful link and webpage to purchase practice papers:

[Free Materials - GL 11+ \(gl-assessment.co.uk\)](https://www.gl-assessment.co.uk)



APPENDIX 1

Sample Questions and Information for Candidates

.....

The Selection Tests

Introduction

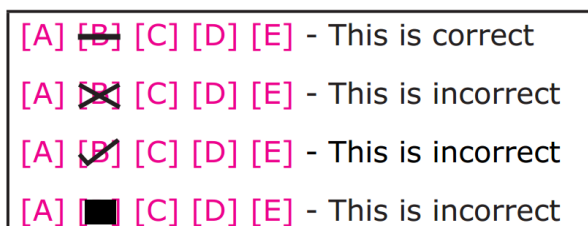
You will sit three test papers:

- Mathematics Test
- English Test
- Verbal Reasoning Test

We are unable to reproduce full specimen papers for copyright reasons, however we have provided some sample questions.

How to write your answers on an Optical Mark Recognition (OMR) sheet

The answer sheet is an OMR sheet (Optical Mark Recognition sheet) and your answers to the tests should be marked by putting a single clear line through the answer of your choice. See examples below.



The Mathematics Test

The mathematics test lasts for 50 minutes and consists of approximately 50 multiple choice questions.

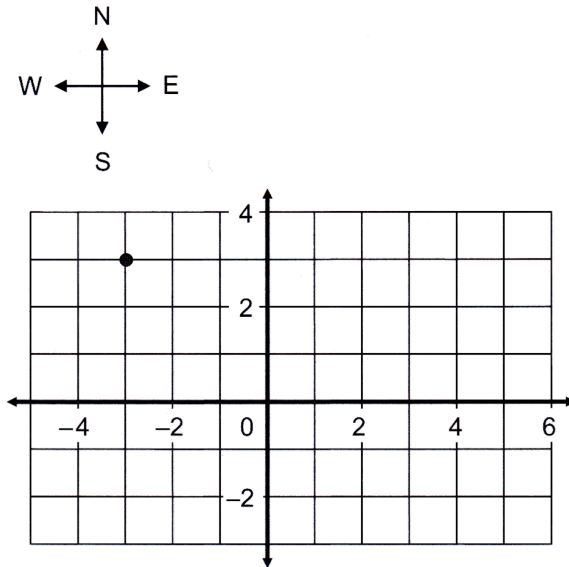
You will be given a question booklet which contains the questions and you will have an answer sheet where you record your answers. There are two sample maths questions in this booklet.



Mathematics Sample Questions:

Sample 1

A robot moves from the point $(-3, 3)$ to the point $(5, -2)$ along the lines of a square grid.



Which of these could describe its route?

- a. 2 steps West and 1 step South
- b. 2 steps East and 5 steps South
- c. 5 steps East and 2 steps South
- d. 8 steps East and 5 steps South
- e. 8 steps West and 5 steps North

Please mark
like this ➡.

7	
A	<input type="checkbox"/>
B	<input type="checkbox"/>
C	<input type="checkbox"/>
D	<input type="checkbox"/>
E	<input type="checkbox"/>

Sample 2

Look at this number fact:

$$789 \times 36 = 28,404$$

What is 18×789 ?

- 7101
- 14,202
- 14,204
- 14,991
- 15,774

Please mark
like this ➡.

33	
7101	<input type="checkbox"/>
14,202	<input type="checkbox"/>
14,204	<input type="checkbox"/>
14,991	<input type="checkbox"/>
15,774	<input type="checkbox"/>

The English Test

The English test lasts for either 45 or 50 minutes and consists of multiple choice questions.

You will be given a question booklet which contains two extracts with comprehension questions and there will also be questions on spelling, punctuation and grammar.

There are examples of the spelling, punctuation and grammar questions below.

Sample English questions:

Spelling sample question

In the passage below there are some spelling mistakes. On each numbered line there is either one mistake or no mistake. Find the group of words with the mistake in it and mark its letter on your answer sheet. If there is no mistake, mark N.

End of Term

- | | | | | | | |
|----|---|--------------|--------------|--------------|--------------|--------------|
| 1. | It was nearly time to go to school so Emily hurriedly began to pack her bag with | <div>A</div> | <div>B</div> | <div>C</div> | <div>D</div> | <div>N</div> |
| 2. | all of the things she needed. She was looking forward to the holaday next week when she | <div>A</div> | <div>B</div> | <div>C</div> | <div>D</div> | <div>N</div> |
| 3. | was going to the beach. She loved to make sand castles and paddle in the waves. | <div>A</div> | <div>B</div> | <div>C</div> | <div>D</div> | <div>N</div> |

ANSWER:

- | | |
|----|---------------------|
| 1. | [A] [B] [C] [D] [N] |
| 2. | [A] [B] [C] [D] [N] |
| 3. | [A] [B] [C] [D] [N] |



Sample Punctuation Questions

In this passage there are some mistakes in the use of capital letters and punctuation. On each numbered line there is either one mistake or no mistake. Find the group of words with the mistake in it and mark its letter on your answer sheet. If there is no mistake, mark N.

The Lesson

1. The geography teacher was explaining to the class that america was a world
A B C D N
2. superpower when she noticed that Emilys hand was up. "What is it, Emily?"
A B C D N
3. she asked. Emily cleared her throat and then asked her question.
A B C D N

ANSWER:

1. [A] [B] [C] [D] [N]

2. [A] [B] [C] [D] [N]

3. [A] [B] [C] [D] [N]

Sample Grammar Questions

In each question you have to choose the best word, or group of words, to complete this passage so that it makes sense and is written in correct English. You should choose one of the five answers and mark its letter on your answer sheet.

The Writer

George O'Connor sank back into his seat and scratched his head. He knew that he

1. should of should have could of will have will of
A B C D E
2. used a dictionary because since despite whereas however
A B C D E
- being a good speller.

ANSWER:

1. [A] [B] [C] [D] [N]

2. [A] [B] [C] [D] [N]

3. [A] [B] [C] [D] [N]

The Verbal Reasoning Test

The VR (Verbal Reasoning) test lasts for 50 minutes and consists of approximately 80 multiple choice questions.

You will be given a question booklet which contains the questions and an answer sheet to record your answers.

Sample Verbal Reasoning Questions:

Sample 1

In this question, the same letter must fit into both sets of brackets, to complete the word in front of the brackets and to begin the word after the brackets. Choose the correct answer from the options beneath.

tha [?] ail
kee [?] avy

- A. t** **B. n** **C. p** **D.m** **E. w**

Sample 2

In this question, one letter can be moved from the first word to the second word to make two new words. The letters must not otherwise be rearranged and both new words must make sense. Find the letter that moves from the options beneath.

trowel petty

- A. t** **B. w** **C. o** **D.r** **E. e**

ANSWER:

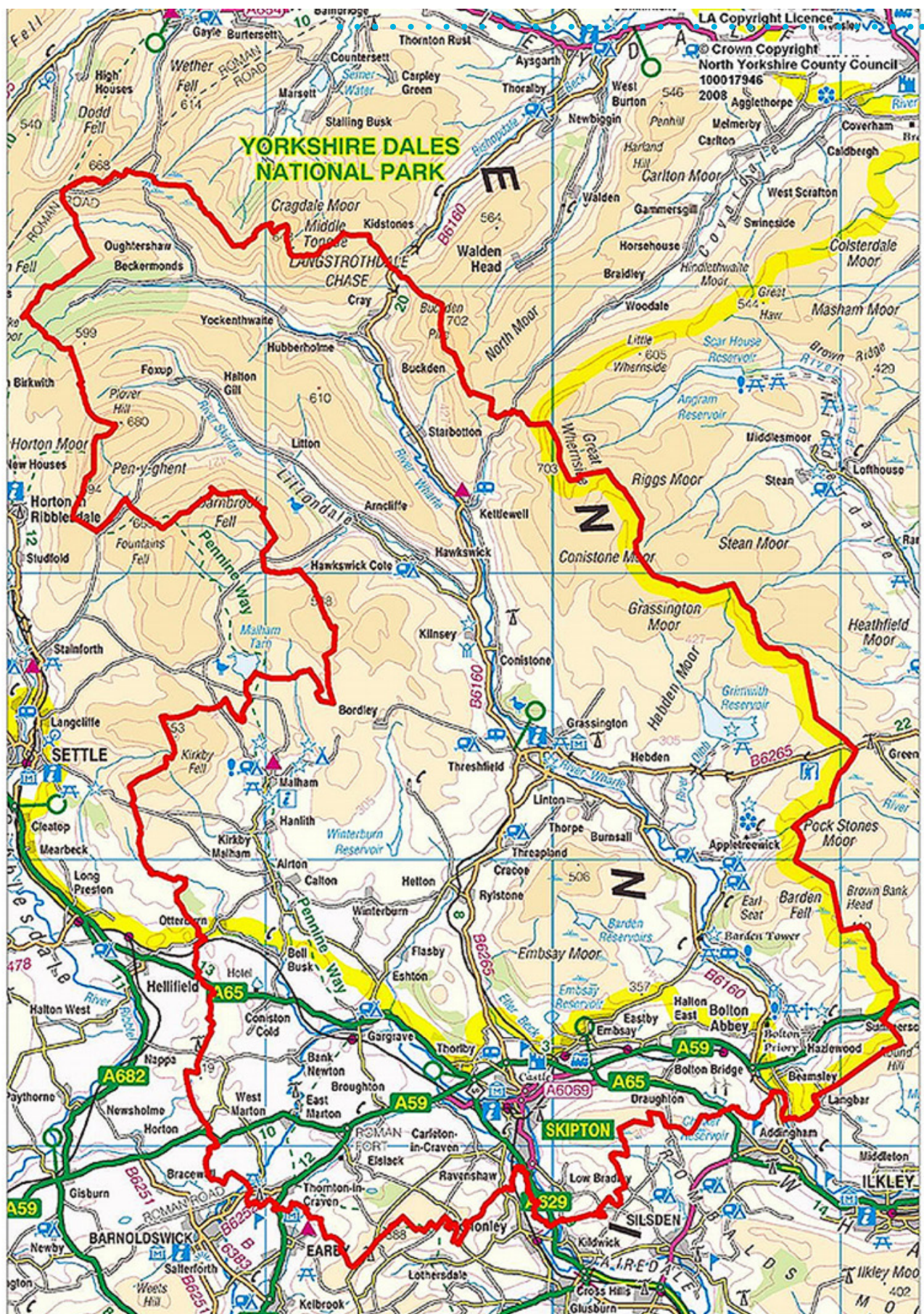
1. [A] [B] [C] [D] [N]
2. [A] [B] [C] [D] [N]

If you want to do more practice papers
see the information on page 11.



APPENDIX 2

Map of School Priority Area



**Skipton Girls' High School,
Gargrave Road, Skipton,
North Yorkshire BD23 1QL**

Tel: 01756 707600

Email: admissions@sghs.org.uk

Website: www.sghs.org.uk

Tweet: [@skiptongirls](https://twitter.com/skiptongirls)